

PROJECT MAP

FINS/Babine Forest Products
Fish and Fish Habitat Inventory

Pierre/Twain
Mapsheet 093L070

Map 1 of 4

SCALE 1 : 20,000



Projection: ALBERS EQUAL AREA

PRINTED: May 03, 2001

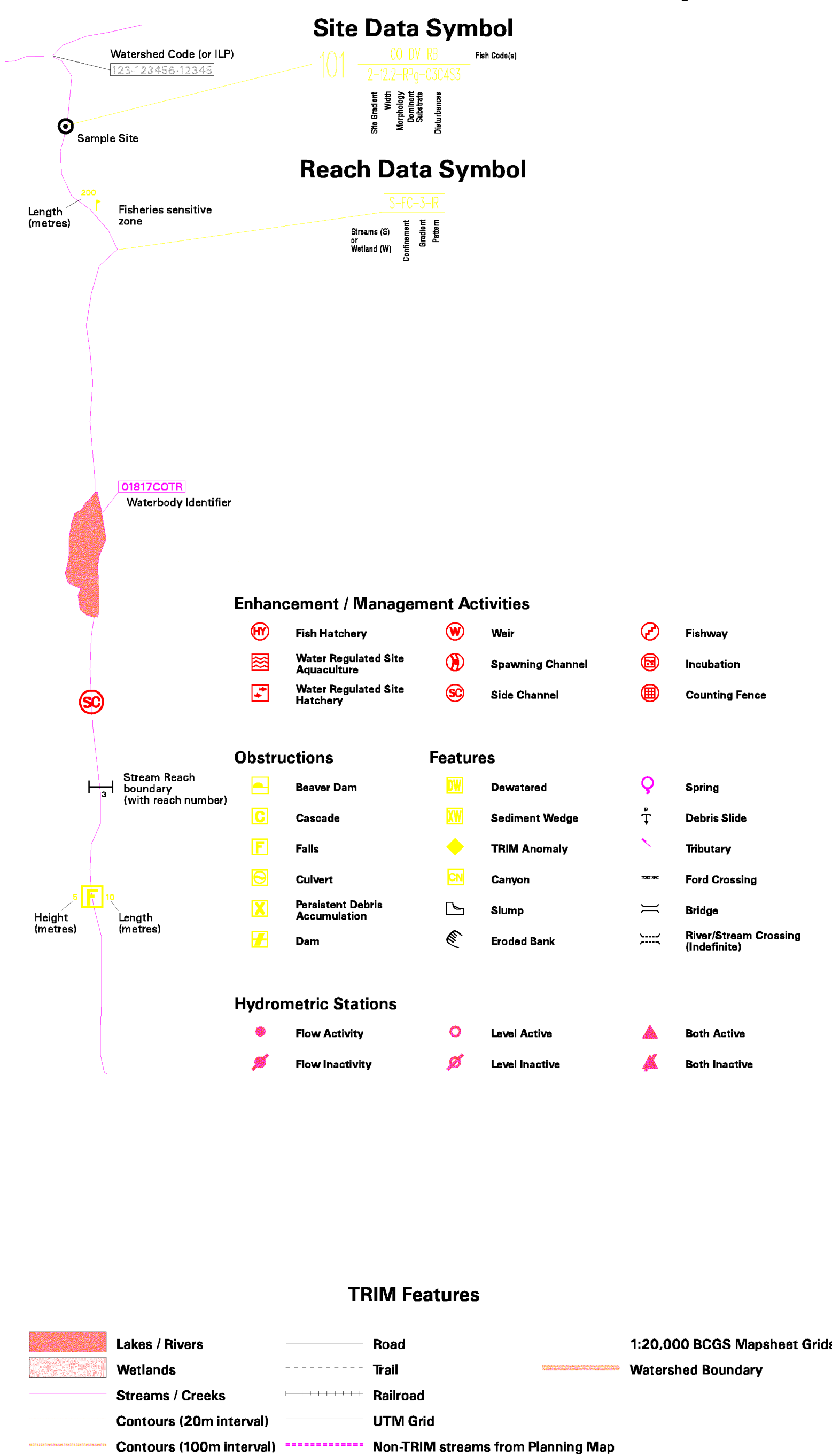
AML - y:\active\fins\aml\fins-fhproj99(suppl).aml
Supplement AML - y:\active\fins\aml\fins-fhproj99(suppl).aml

PREPARED BY:

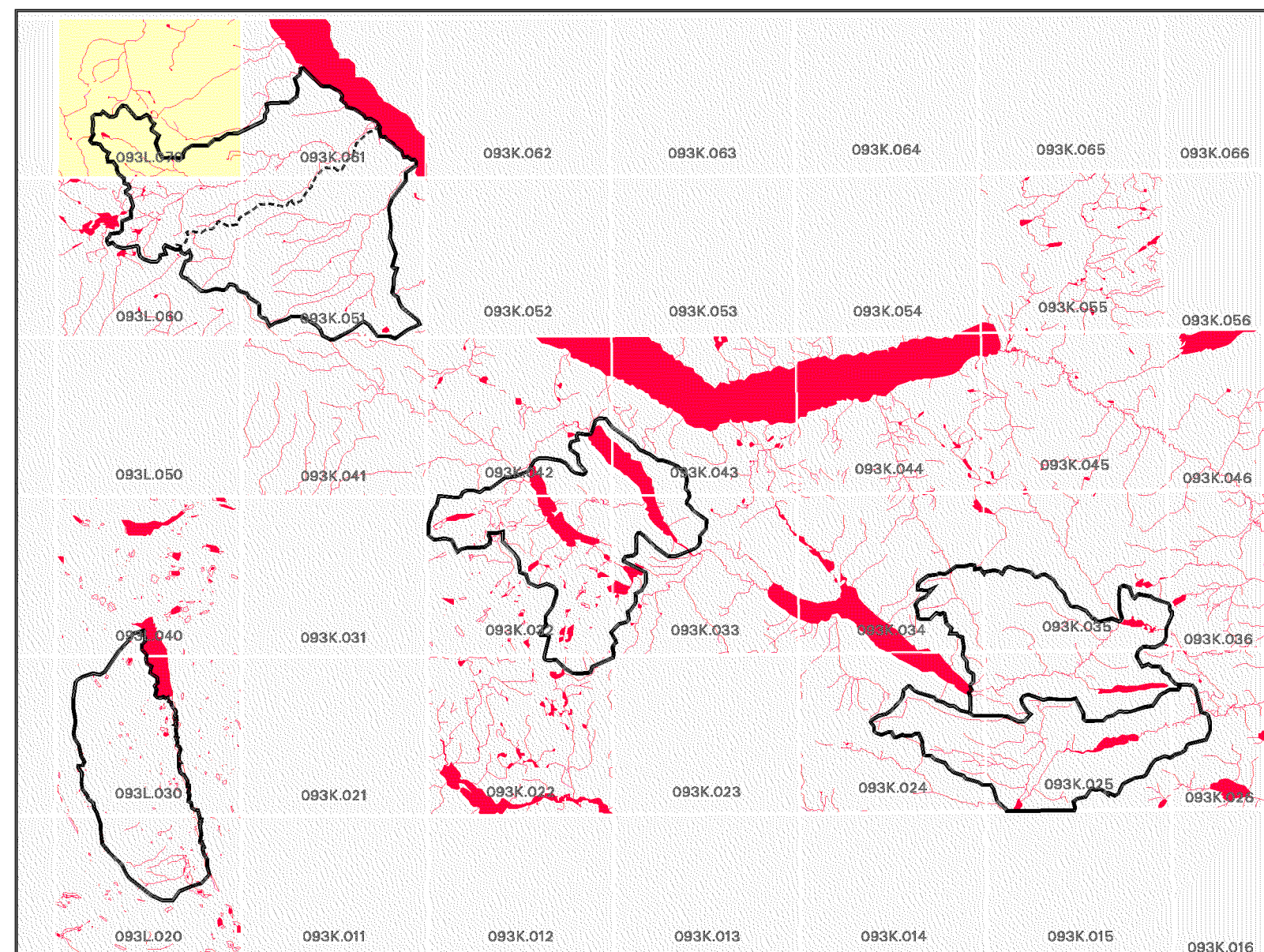
FINS
FISH INVENTORY SPECIALISTS

AMD
Digital Imaging

Stream Information Summary



Project Area(s)



Source Information

BASE: TR
LOC: FDG
HAB: INV
FISH: INV
DATE INV: July/0 - September 29, 1999
STR SYM: INV
LK SYM: INV
INV MGMT: MELP

MAPPING STANDARDS: B.C. Ministry of Fisheries - "Standards for Fish and Fish Habitat Maps"
VERSION: 2.0
DATE: May 1998 (Errata #2 May 2000)

MAP ACCURACY IS PLUS OR MINUS 20 METRES

Fish Species Codes

DV/ST Dolly Varden/Bull Trout
CT Cutthroat Trout
RB Rainbow Trout
TSB Threespine Stickleback
CAL Coastrange Sculpin
PK Pink Salmon
SP Splake
CCG Slimy Sculpin
WF White Fish General

Stream Confinement Codes

WCT Westslope Cutthroat Trout
SU General Sucker
NS Not Sampled
NCD Non Classified Drainage
NVC No Visible Channel
NFC No Fish Caught
SP Species present, not identified
(I) Presumed fish presence

Stream Pattern Codes

ST Straight
SI Sinuous
IR Irregular, wandering
IM Irregular, meandering
ME Regular meander
TM Tortuous meanders

Stream Morphology Codes

RP Riffle Pool
CP Cascade Pool
SP Step Pool
LC Large Channel

Substrate Codes

F Fines <2mm
G Gravels 2-64mm
C Cobbles 64-256mm
B Boulders >256mm
R Rock >4000mm

Disturbance Indicator Codes

O1 Beaver Dams
B1 Abandoned Channels
B2 Eroding Banks
B3 Avulsions
C1 Extensive Riffles or Cascades
C2 Minimal Pool Area
C3 Elevated Mid-channel Bar
C4 Multiple Channels or Bars
C5 Disturbed Stone Lines
D1 Small woody debris
D2 Large woody debris
D3 Recently formed LWD jams
D4 Homogeneous bed texture
D5 Sediment fingers
D6 Sediment wedges
D7 Extensive bars
D8 Extensively scoured zones

This product has been accepted as being in accordance with approved standards within the limits of Ministry quality assurance procedures. Users are cautioned that interpreted information on this product developed for the purposes of the Forest Practices Code Act and Regulations, for example stream classifications, is subject to review by a statutory decision maker for the purpose of determining whether or not to approve an operational plan.